

'FP-C' Flameproof Immersion Heaters

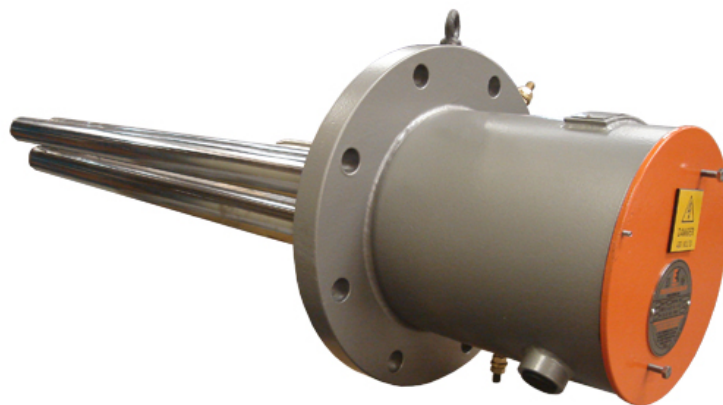
The EXHEAT 'FP-C' range of flameproof removable single and multi core heaters offers a Hazardous Area heating solution for oil and similar applications where low heat density is required. The element can be withdrawn for inspection without system drain down. The standard heater consists of a single element or multi core fitted into a mounting flange. A robust Ex'd' terminal enclosure protects the electrical connections. The watts density of the element core fitted depends upon the media to be heated and the kilowatt rating required.

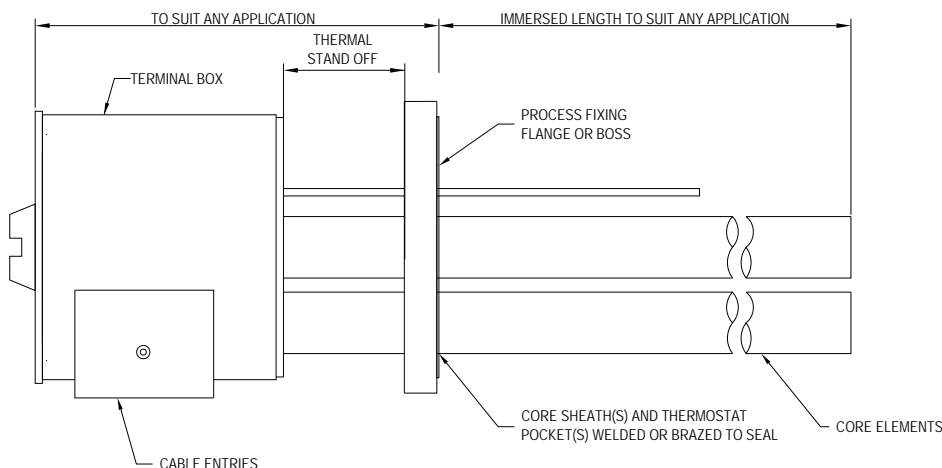
FEATURES

- Certified to meet the ATEX directive 94/9/EC
- Mild Steel or 316 Stainless Steel terminal enclosure with weatherproof protection to IP65.
- Choice of built in process temperature sensors.
- Suitable for ambient temperatures to -50 °C to +60 °C.
- Mounting of the heater can be by a threaded boss or an industry standard flange.
- Designed for horizontal installation only. Vertical mounting version available on request.
- Can be supplied with the terminal box mounted away from the fixing boss/flange for high process temperatures.

TYPICAL APPLICATIONS

- Pre-Heating Oil/Water
- Processing Equipment
- Cleaning & Rinsing Tanks
- Heat Transfer Systems
- Boiler Equipment
- Frost Protection





Terminal box type	Minimum Flange Size		kW LOAD with a maximum Immersed Length of 3665mm	
	Ins	mm	Max. Cable Entries	Max. No. of Cores
FP4	3	75	1 off M25 & 1 off M20	1
FP6	6	150	1 off M32 & 2 off M25	3
FP8	8	200	2 off M25 & 1 off M40	6
FP10	10	250	2 off M32 & 1 off M25	9
FP12	12	300	3 off M32 & 1 off M20	12

- Certification** ATEX Certified II 2 G/D ATEX or IECEx Certified Ex'd' IIC T1 to T6 Ex tD A21 IP66 T.... °C EN/IEC 60079-0, EN/IEC 60079-1, EN/IEC 61241-0 + EN/IEC 61241-1
- Enclosure** Mild Steel or 316 Stainless Steel, external and internal earths, screwed terminal cover, finished in epoxy paint (If required).
- Elements** Removable core, comprising high quality 80/20 Nickel Chrome resistance wire, contained within ceramic formers.
- Element** A choice of Carbon Steel, or Stainless Steel Sheath, secured by either brazing or welding depending upon the process application.
- Controls** Heater over-temperature protection is fitted as standard. Optional process temperature sensing devices can be incorporated in the form of thermostats, RTD's or thermocouples.
- Mounting** Any threaded boss or flange in any material can be specified within the limits of the design parameters. Heaters can be either 'direct-on' or 'stand-off'.
- Rating** To suit process requirement within the design parameters and ATEX approval.
- Voltage** Any electrical supply up to 690v.