

'FP-RCH' Flameproof Storage Water Heater

The EXHEAT 'FP-RCH' range of vented storage water heaters are suitable for single or multi-outlet use in washrooms and laboratories that are designated as Zone 1 and Zone 2 Hazardous Areas, where the flammable atmosphere is a group IIA, IIB or IIC gas.

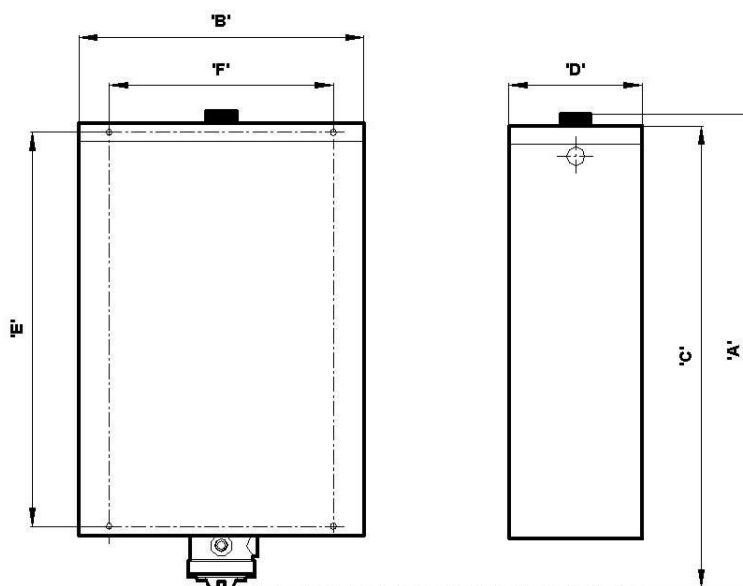


FEATURES

- Certified to meet the ATEX Directive 94/9/EC.
- Direct connection to the incoming mains water supply.
- Easy wall mounting, with right or left hand water inlet connection.
- Self contained cold water feed tank with integral ball valve.
- Choice of capacity from 25 to 100 litres.

TYPICAL APPLICATIONS

- Washrooms in petrochemical installations
- Rest rooms on oil jetties
- Laboratories
- Offshore installations
- Chemical plants



Model	Capacity Litres		Dimensions (mm)						Weight (kg)	
	Hot	Cold	A	B	C	D	E	F	Empty	Full
FP-RCH25	25	8	78	470	815	210	670	320	24	57
FP-RCH50	50	24	830	600	860	320	715	450	36	110
FP-RCH75	75	24	1005	600	1030	320	890	450	41	140
FP-RCH100	100	24	1160	600	1190	320	1045	450	44	168

- Certification** ATEX Certified Ex II 2 G Ex'd' IIC T4 – T6 to EN60079-0 and EN60079-1. Control thermostat adjustable to 65°C.
- Water Tank** Hot water storage and cold water feed tanks are both manufactured from Copper sheet with brazed seams.
- Casing** Corrosion proofed Steel with white enamel finish.
- Insulation** CFC free, foiled, urethane slab.
- Heating Element** High quality 80/20 Nickel Chrome resistance wire compacted in Magnesium Element Oxide insulating powder and encased in Incoloy 825 metal sheath.
- Enclosure** Cast Aluminium alloy with one M25 cable entry, external and internal earths, and screwed terminal cover.
- Controls** Box cut out for 'T' class protection and float switch for element protection.
- Mounting** Wall mounting. (Minimum 1 metre above the highest draw off point).
- Rating** 25 Litre & 50 Litre – 2 kW / 240v
75 Litre & 100 Litre – 2 kW / 240v