

'HEOL' Line Heaters

The EXHEAT 'HEOL' range of line heaters is suitable for heating all process fluids which are non-corrosive to the materials of construction. They provide a safe, low density, electrical heating method, for viscous liquid flow applications.

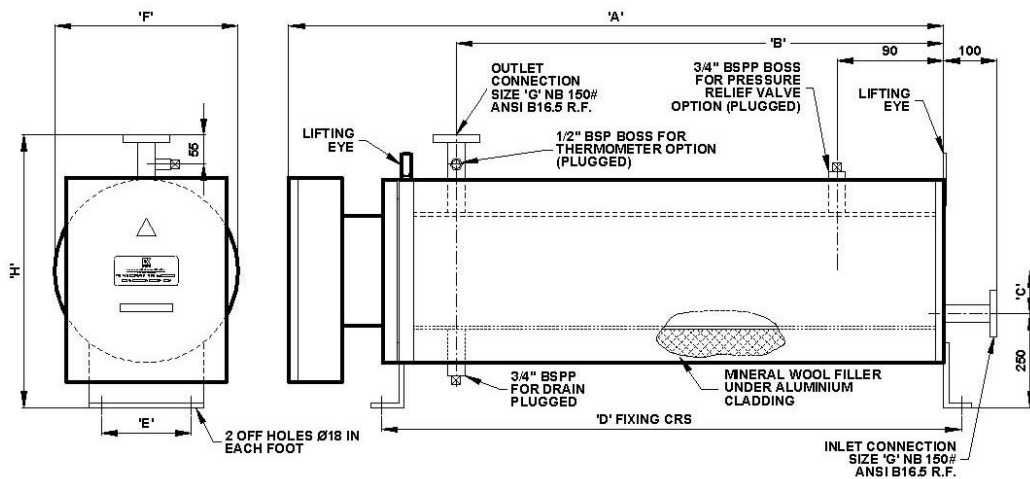


FEATURES

- Removable ceramic core elements - can be replaced without draining.
- Thermal insulation and cladding.
- Weatherproof terminal enclosure with protection to IP55.
- Working pressure up to 73 psi g (5 bar.g).
- Working temperature to 150 °C.
- Internal control thermostats and over-temperature thermostat.
- Also available in "Flameproof" construction for hazardous areas.
- Alternative materials of construction available.
- Designed for horizontal installation only. Vertical mounting version available on request.

TYPICAL APPLICATIONS

- Lube oil pre-heating
- Fuel Oil
- Heat transfer oils
- Tempering of low grade residual oils for burners and engines



Model	Loading (kW)	Dimensions (mm)							
		'A'	'B'	'C'	'D'	'E'	'F'	'G'	'H'
HEOL 1/3	3	995	640	50	865	220	290	40	526
HEOL 2/6	6	995	640	50	865	220	290	40	526
HEOL 3/9	9	1395	640	50	865	220	290	40	526
HEOL 3/12	12	1395	1040	50	1265	220	290	40	526
HEOL 3/15	15	1705	1040	50	1265	220	290	40	526
HEOL 3/18	18	1705	1350	50	1575	220	290	40	526
HEOL 6/24	24	1195	835	75	1060	260	353	40	575
HEOL 6/30	30	1395	1035	75	1260	260	353	40	575
HEOL 6/36	36	1595	1235	75	1460	260	353	40	575
HEOL 6/42	42	1795	1435	75	1660	260	353	40	575
HEOL 6/48	48	1995	1635	75	1860	260	353	40	575
HEOL 9/54	54	1595	1235	75	1460	300	416	40	628
HEOL 9/63	63	1795	1435	75	1660	300	416	40	628
HEOL 9/72	72	1995	1635	75	1860	300	416	40	628
HEOL 9/81	81	2195	1835	75	2060	300	416	40	628

- Enclosure** Weatherproof protection to IP55.
- Element** Incoloy 825 sheathed rod type.
- Working Pressure** Up to 5 bar.g (73 psi g).
- Design Code** Sound engineering practice. (SEP)
- Vessel** Carbon Steel.
- Insulation** Mineral Wool.
- Cladding** Stucco Aluminium.
- Voltage** Standard supplies up to 690v.