

'HEWL' Line Heaters

The EXHEAT 'HEWL' range of line heaters is suitable for heating all process fluids which are non-corrosive to the materials of construction. They provide a safe electrical heating method, for bulk liquid flow applications.

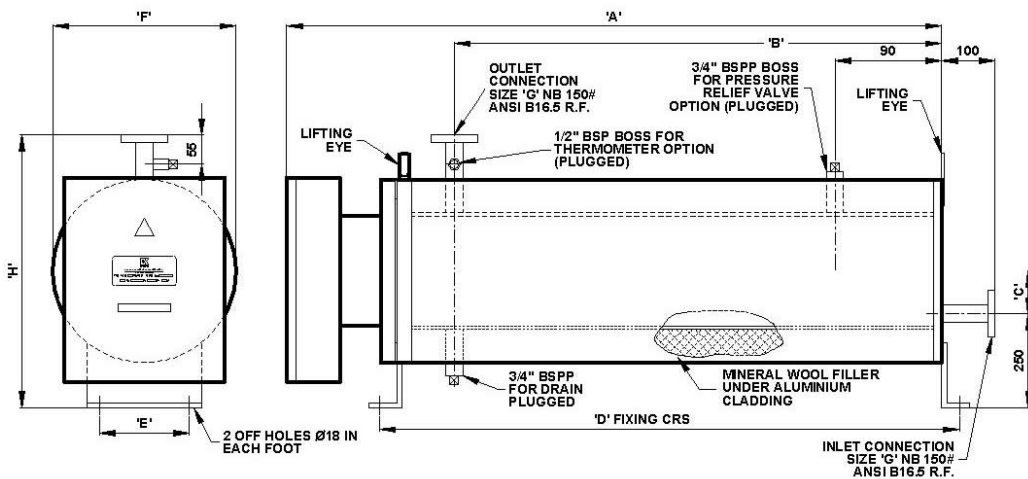


FEATURES

- Thermal insulation and cladding.
- Weatherproof terminal enclosure with protection to IP55.
- Individually replaceable Incoloy 825 sheathed elements.
- Working pressure up to 73 psi g (5 bar.g).
- Working temperature to 150 °C.
- Internal control thermostats and over-temperature thermostat.
- Also available in "Flameproof" construction for hazardous areas.
- Alternative materials of construction available.
- Designed for horizontal installation only. Vertical mounting version available on request.

TYPICAL APPLICATIONS

- Industrial washing and rinsing processes.
- Indirect heating of liquids
- Engine jacket pre-heating
- Temperature maintenance of storage tanks
- Under floor heating schemes



Model	Loading (kW)	Dimensions (mm)							
		'A'	'B'	'C'	'D'	'E'	'F'	'G'	'H'
HEWL15	15	1395	1040	50	1265	220	290	40	526
HEWL18	18	1395	1040	50	1265	220	290	40	526
HEWL24	24	1705	1350	50	1575	220	290	40	526
HEWL30	30	1705	1350	50	1575	220	290	40	526
HEWL45	45	1795	1435	74	1660	260	353	40	575
HEWL60	60	1795	1435	74	1660	260	353	40	575
HEWL75	75	1795	1435	100	1660	300	416	40	628
HEWL90	90	1795	1435	100	1660	300	416	40	628
HEWL105	105	1795	1435	100	1660	300	416	40	628
HEWL120	120	1795	1435	100	1660	300	416	40	628

- Enclosure** Weatherproof protection to IP55.
- Element** Incoloy 825 sheathed rod type.
- Working Pressure** Up to 5 bar.g.
- Design Code** Sound engineering practice. (SEP)
- Vessel** Carbon Steel.
- Insulation** Mineral Wool.
- Cladding** Stucco Aluminium.
- Voltage** Standard supplies up to 690v.