

DX

20 A

32 A

63 A

125 A

200 A

- Explosive atmospheres
- IP 65 as standard
- Up to 200 A
- Metal casing

DX decontactors are designed for explosive atmospheres, with 'de' protection mode. They comply with the ATEX 94/9/CE directive. They can be used in zones 1 & 2 (Gas) and zones 21 & 22 (Dust). They are certified according to IEC Ex.

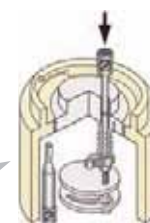
Mechanical features

- Enclosure "d": during connection and disconnection, electric arc is contained



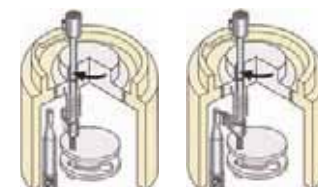
Interior moulding in the rest position: Cut view of the explosion-proof chamber.

Connection :



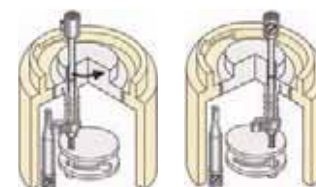
Socket-outlet with a plug contact engaged: Closing of the dead butt-contact(s) ; unlocking of the interior moulding.

- Aluminium casing
- IK10 resistance to shocks
- External male contacts: these pins engage with the spring-loaded silver-nickel butt contacts inside the socket
- IP65 lid
- ON/OFF indicator
- Design ensures conformity to interlock standard EN 60309-4 : no live contacts.



Plug rotation: Tensioning of switch springs. Sudden closure of switch contacts.

Disconnection :



Reversed rotation of the plug: Sudden opening of the switch contacts. Return of the plug to its "off" parked position.

SPECIFICATION

IP65 plug and socket-outlet for explosive atmospheres (ATEX) with integral switching device, comply with BECMA international standard.



Product technical data sheet at: www.marechal.com



METAL Ex DECONTACTOR™



Locking with Allen key



Sugar silo



Operation for connection



Aviation maintenance hangar

Technical features

Plugs and sockets with integral load-break switching capability complying with IEC EN 60309-1 and IEC EN 60309-4 standards

	DX1	DX3	DX6	DX9	DX2
Rated current (In)	20 A	32 A	63 A	125 A	200 A
U _{max}	750 V	750 V	750 V	750 V	750 V
Keying positions (*)	12	12	12	12	12
Ambient temperature	-25 °C ≤ Ta ≤ +60 °C (for DX1 & DX3)		-40 °C ≤ Ta ≤ +60 °C (for DX6, DX9 & DX2)		
Protection	“de”	“de”	“de”	“de”	“de”
ATEX zones	Zones 1 & 2 (gas) Zones 21 & 22 (dusts) - for all DX range				

(*) To discriminate between different power supplies and applications

Regulatory features

DX decontactors comply with:

- The ATEX 94/9/CE directive,
- CEI 60079-0 (2006), CEI 60079-1 (2003), CEI 60079-7 (2006), CEI 61241-0 (2004) & CEI 61241-1 (2004) International standards,
- CEI 60309-1 & CEI 60309-4 European and International standards (plugs and socket-outlets for industrial purposes),
- The European Low Voltage Directive 2006/95/CE,
- The European ‘Machine Directive’ regarding equipment isolation,
- The French NF C 15-100 standard,
- The French decree n°88-1056 dated 14th November 1988,
- The decrees relating to workers’ protection in Belgium, Spain and Italy.

Also certified by GOST and VERITAS LCIE.



DX1

DECONTACTOR™

METAL CASING

up to 20 A — IP65



Typical configuration:

Wall mounting socket



Plug



Wall box
26 2A B53



Socket-outlet
26 24 017



Plug
26 21 017

Plugs and sockets with load-break capability complying with IEC EN 60309-1 and IEC EN 60309-4 standards

Main features:

Rated current (with wiring according to standard)	20 A	Flexible wiring (min - max)	2,5 - 10 mm ²
Maximum voltage	750 V	Stranded wiring (min - max)	2,5 - 10 mm ²
IP protection lid closed	IP65	Other wiring on request	
IP protection connected plug	IP65	Keying positions	12
Resistance to shocks	IK10	Protection mode	de
Ambient temperature	-25 °C to +60 °C	ATEX zones	1 & 2, 21 & 22

! Each socket outlet or socket connector must be associated with a box or a handle.

Locking position connected or disconnected by lockable shaft.



Temperature :

DX1 is T5 up to +60 °C and T6 up to +50 °C.

Other voltages and polarities are available (see technical manual p.199)

Socket-outlet (female)



Voltage 50 Hz	Polarity	Part no.
220 - 250V	1P+N+E	26 24 015
380 - 440V	3P+E	26 24 013
380 - 440V	3P+N+E	26 24 017

Inlet (male)



Voltage 50 Hz	Polarity	Part no.
220 - 250V	1P+N+E	26 28 015
380 - 440V	3P+E	26 28 013
380 - 440V	3P+N+E	26 28 017

Boxes

Ex cable gland included



Wall box metal 90°

Cable gland entry	Part no.	
M20	26 2A B53	8 - 13 mm
M25	26 2A B53 25M	9 - 16 mm
M32	26 2A B53 32M	12 - 21 mm

Plug (male)

Ex cable gland included



Voltage 50 Hz	Polarity	Part no.	
220 - 250V	1P+N+E	26 21 015	8 - 13 mm
380 - 440V	3P+E	26 21 013	8 - 13 mm
380 - 440V	3P+N+E	26 21 017	8 - 13 mm

Handle

Ex cable gland included



Straight metal

Cable gland entry	Part no.	
M20	26 2A 963	8 - 13 mm
M25	26 2A 953 25M	9 - 16 mm
M32	26 2A 953 32M	12 - 21 mm

Boxes

Ex cable gland included



Wall box metal 90°

Cable gland entry	Part no.	
M20	26 2A B53	8 - 13 mm
M25	26 2A B53 25M	9 - 16 mm
M32	26 2A B53 32M	12 - 21 mm

MARECHAL ELECTRIC MAROMME
Ⓢ II2 G/D Ex de IIC tD A21
-25°C ≤ Ta ≤ +60°C T5 T84°C
-25°C ≤ Ta ≤ +50°C T6 T74°C
IECEx LCI 09.0014 / LCIE 05 ATEX 6127



Typical configuration:

Wall mounting socket



Plug



Wall box
26 3A B53



Socket-outlet
26 34 017



Plug
26 31 017

Plugs and sockets with load-break capability complying with IEC EN 60309-1 and IEC EN 60309-4 standards

Main features:

Rated current (with wiring according to standard)	32 A
Maximum voltage	750 V
IP protection lid closed	IP65
IP protection connected plug	IP65
Resistance to shocks	IK10
Ambient temperature	-25 °C to +60 °C

Flexible wiring (min - max)	2,5 - 10 mm ²
Stranded wiring (min - max)	2,5 - 10 mm ²
Other wiring on request	
Keying positions	12
Protection mode	de
ATEX zones	1 & 2, 21 & 22

⚠ Each socket outlet or socket connector must be associated with a box or a handle.

Locking position connected or disconnected by lockable shaft.



Temperature :
DX3 is T₅ up to +60 °C and T₆ up to +50°C.

Other voltages and polarities are available (see technical manual p.199)

Socket-outlet (female)



Voltage 50 Hz	Polarity	Part no.
220 - 250V	1P+N+E	26 34 015
380 - 440V	3P+E	26 34 013
380 - 440V	3P+N+E	26 34 017

Inlet (male)



Voltage 50 Hz	Polarity	Part no.
220 - 250V	1P+N+E	26 38 015
380 - 440V	3P+E	26 38 013
380 - 440V	3P+N+E	26 38 017

Boxes

Ex cable gland included



Wall box metal 90°

Cable gland entry	Part no.
M20	26 3A B53 20M 8 - 13 mm
M25	26 3A B53 9 - 16 mm
M32	26 3A B53 32M 12 - 21 mm

Plug (male)

Ex cable gland included



Voltage 50 Hz	Polarity	Part no.
220 - 250V	1P+N+E	26 31 015 9-16 mm
380 - 440V	3P+E	26 31 013 9-16 mm
380 - 440V	3P+N+E	26 31 017 9-16 mm

Handle

Ex cable gland included



Straight metal

Cable gland entry	Part no.
M20	26 3A 953 20M 8 - 13 mm
M25	26 3A 963 9 - 16 mm
M32	26 3A 953 32M 12 - 21 mm

Boxes

Ex cable gland included



Wall box metal 90°

Cable gland entry	Part no.
M20	26 3A B53 20M 8 - 13 mm
M25	26 3A B53 9 - 16 mm
M32	26 3A B53 32M 12 - 21 mm

MARECHAL ELECTRIC MAROMME
© I12 G/D Ex de IIC tD A21
-25 °C ≤ Ta ≤ +60 °C T5 T84 °C
-25 °C ≤ Ta ≤ +50 °C T6 T74 °C
IECEX LCI 09.0014 / LCIE 05 ATEX 6127

DX6

DECONTACTOR™

METAL CASING

up to 63 A — IP65



Typical configuration:

Wall mounting socket



Plug



Wall box
26 6A B53



Socket-outlet
26 64 017



Plug
26 61 017

Plugs and sockets with load-break capability complying with IEC EN 60309-1 and IEC EN 60309-4 standards

Main features:

Rated current (with wiring according to standard)	63 A	Flexible wiring (min - max)	16 - 50 mm ²
Maximum voltage	750 V	Stranded wiring (min - max)	16 - 50 mm ²
IP protection lid closed	IP65	Other wiring on request	
IP protection connected plug	IP65	Keying positions	12
Resistance to shocks	IK10	Protection mode	de
Ambient temperature	-40 °C to +60 °C	ATEX zones	1 & 2, 21 & 22

! Each socket outlet or socket connector must be associated with a box or a handle.

Locking position connected or disconnected by lockable shaft.



Temperature :

DX6 is T6 up to +50 °C and T5 up to +60 °C.

Other voltages and polarities are available (see technical manual p.199)

Socket-outlet (female)



Voltage 50 Hz	Polarity	Part no.
220 - 250V	1P+N+E	26 64 015
380 - 440V	3P+E	26 64 013
380 - 440V	3P+N+E	26 64 017

Inlet (male)



Voltage 50 Hz	Polarity	Part no.
220 - 250V	1P+N+E	26 68 015
380 - 440V	3P+E	26 68 013
380 - 440V	3P+N+E	26 68 017

Boxes

Ex cable gland included



Wall box metal 90°

Cable gland entry	Part no.
M25	26 6A B53 25M 9 - 16 mm
M32	26 6A B53 12 - 21 mm
M40	26 6A B53 40M 16 - 27 mm

Plug (male)

Ex cable gland included



Voltage 50 Hz	Polarity	Part no.
220 - 250V	1P+N+E	26 61 015 12-21 mm
380 - 440V	3P+E	26 61 013 12-21 mm
380 - 440V	3P+N+E	26 61 017 12-21 mm

Handle

Ex cable gland included



Straight metal

Cable gland entry	Part no.
M25	26 6A 953 25M 9 - 16 mm
M32	26 6A 963 12 - 21 mm
M40	26 6A 953 40M 16 - 27 mm

Boxes

Ex cable gland included



Wall box metal 90°

Cable gland entry	Part no.
M25	26 6A B53 25M 9 - 16 mm
M32	26 6A B53 12 - 21 mm
M40	26 6A B53 40M 16 - 27 mm

MARECHAL ELECTRIC MAROMME
Ⓢ II2 G/D Ex de IIC tD A21
-40 °C ≤ Ta ≤ +60 °C T5 T90 °C
-40 °C ≤ Ta ≤ +50 °C T6 T80 °C
IECEx LCI 09.0015 / LCIE 04 ATEX 6038



Typical configuration:

Wall mounting socket



Plug



Wall box
26 9A B53



Socket-outlet
26 94 017



Plug
26 91 017

Plugs and sockets with load-break capability complying with IEC EN 60309-1 and IEC EN 60309-4 standards

Main features:

Rated current (with wiring according to standard)	125 A
Maximum voltage	750 V
IP protection lid closed	IP65
IP protection connected plug	IP65
Resistance to shocks	IK10
Ambient temperature	-40 °C to +60 °C

Flexible wiring (min - max)	50 - 70 mm ²
Stranded wiring (min - max)	50 - 70 mm ²
Other wiring on request	
Keying positions	12
Protection mode	de
ATEX zones	1 & 2, 21 & 22

⚠ Each socket outlet or socket connector must be associated with a box or a handle.

Locking position connected or disconnected by lockable shaft.



Temperature :
DX9 is T6 up to +50 °C and T5 up to + 60°C.

Other voltages and polarities are available (see technical manual p.199)

Socket-outlet (female)



Voltage 50 Hz	Polarity	Part no.
380 - 440V	3P+E	26 94 013
380 - 440V	3P+N+E	26 94 017

Inlet (male)



Voltage 50 Hz	Polarity	Part no.
380 - 440V	3P+E	26 98 013
380 - 440V	3P+N+E	26 98 017

Boxes

Ex cable gland included



Wall box metal 90°

Cable gland entry	Part no.	
M32	26 9A B53 32M	12 - 21 mm
M40	26 9A B53	16 - 27 mm
M50	26 9A B53 50M	23 - 35 mm
M63	26 9A B53 63M	36 - 48 mm

Plug (male)

Ex cable gland included



Voltage 50 Hz	Polarity	Part no.	
380 - 440V	3P+E	26 91 013	16-27 mm
380 - 440V	3P+N+E	26 91 017	16-27 mm
380 - 440V	3P+E	26 91 013 50M	23-35 mm
380 - 440V	3P+N+E	26 91 017 50M	23-35 mm
380 - 440V	3P+E	26 91 013 63M	36-48 mm
380 - 440V	3P+N+E	26 91 017 63M	36-48 mm

Handle

Ex cable gland included



Straight metal

Cable gland entry	Part no.	
M32	26 9A 953 32M	12 - 21 mm
M40	26 9A 963	16 - 27 mm
M50	26 9A 953 50M	23 - 35 mm
M63	26 9A 953 63M	36 - 48 mm

Boxes

Ex cable gland included



Wall box metal 90°

Cable gland entry	Part no.	
M32	26 9A B53 32M	12 - 21 mm
M40	26 9A B53	16 - 27 mm
M50	26 9A B53 50M	23 - 35 mm
M63	26 9A B53 63M	36 - 48 mm

MARECHAL ELECTRIC MAROMME
© I12 G/D Ex de IIC tD A21
-40 °C ≤ Ta ≤ +60 °C T5 T90 °C
-40 °C ≤ Ta ≤ +50 °C T6 T80 °C
IECEx LCI 09.0015 / LCIE 04 ATEX 6038

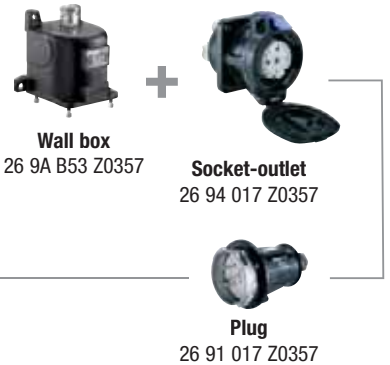


Typical configuration:

Wall mounting socket



Plug



Wall box
26 9A B53 Z0357

Socket-outlet
26 94 017 Z0357

Plug
26 91 017 Z0357

Plugs and sockets with load-break capability (integral switching device according to article 2.8 of EN 60309-1)

Main features:

Rated current (with wiring according to standard)	200 A	Flexible wiring	70 mm ²
Maximum voltage	750 V	Stranded wiring	70 mm ²
IP protection lid closed	IP65	Other wiring on request	
IP protection connected plug	IP65	Keying positions	12
Resistance to shocks	IK10	Protection mode	de
Ambient temperature	-40 °C to +60 °C	ATEX zones	1 & 2, 21 & 22

! Each socket outlet or socket connector must be associated with a box or a handle.

Locking position connected or disconnected by lockable shaft.



Temperature :
DX2 is T₃ up to +60 °C

Other voltages and polarities are available (see technical manual p.199)

MARECHAL ELECTRIC MAROMME
 Ⓢ II2 G/D Ex de IIC tD A21
 -40 °C ≤ Ta ≤ +60 °C T3 T91 °C
 IECEx LCI 09.0015 / LCIE 04 ATEX 6038

Socket-outlet (female)



Voltage 50 Hz	Polarity	Part no.
380 - 440 V	3P+E	26 94 013 Z0357
380 - 440 V	3P+N+E	26 94 017 Z0357

Inlet (male)



Voltage 50 Hz	Polarity	Part no.
380 - 440 V	3P+E	26 98 013 Z0357
380 - 440 V	3P+N+E	26 98 017 Z0357

Boxes

Ex cable gland included



Wall box metal 90°

Cable gland entry	Part no.
M63	26 9A B53 Z0357 36 - 48 mm

Plug (male)

Ex cable gland included



Voltage 50 Hz	Polarity	Part no.
380 - 440 V	3P+E	26 91 013 Z0357 36-48mm
380 - 440 V	3P+N+E	26 91 017 Z0357 36-48mm

Handle

Ex cable gland included



Straight metal

Cable gland entry	Part no.
M63	26 9A 963 Z0357 36 - 48 mm

Boxes

Ex cable gland included



Wall box metal 90°

Cable gland entry	Part no.
M63	26 9A B53 Z0357 36 - 48 mm