

SK

SINGLE POLE AND WELDING CONNECTORS

up to 500 A

Single pole connectors
from 16 to 150 mm²



Main features:

- From 75 to 500 A – Very Low Voltage (maximum 50 V)
- Bayonet locking system providing perfect contact when connected
- Self-cleaning contacts
- Highly reliable silver-nickel butt-contacts
- Crimped connections by lugs
- Optional screw wiring terminals

Type SK	Wiring (mm ²)	In rated current (A)	i max welding cycle (A)	
			5 min cycles	
			60%	30%
SK 2	16	75	100	150
	30	100	125	200
	40	125	150	250
	50	150	200	300
SK 3	50	150	200	300
	75	200	250	350
	100	250	300	400
SK 5	120	275	350	450
	150	325	450	500

* Definition of 30% welding cycle: on a 5 min cycle, 30% of the time working (i.e. 1 min 30 s) and 70% off (i.e. 3 min 30 s).

Inlet (male)

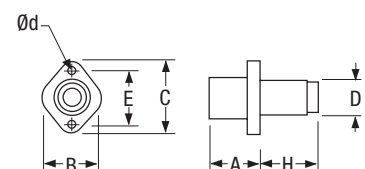
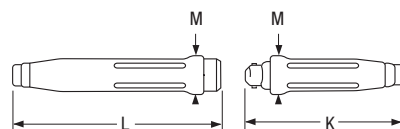


Inlet	Rated current welding cycle		SK 2	SK 3	SK 5
Wire cross-section (mm ²)	60%	30%			
16	100 A	150 A	42 901 016		
30	125 A	200 A	42 901 030		
40	150 A	250 A	42 901 040		
50	200 A	300 A	42 901 050	43 901 050	
75	250 A	350 A		43 901 075	
100	300 A	400 A		43 901 100	
120	350 A	450 A			45 901 120
150	450 A	500 A			45 901 150
à vis	200 A	300 A	42 901 121		
à vis	300 A	400 A		43 901 121	
à vis	450 A	500 A			45 901 121



Plug	Rated current welding cycle		SK 2	SK 3	SK 5
Wire cross-section (mm ²)	60%	30%			
16	100 A	150 A	40 201 016		
30	125 A	200 A	40 201 030		
40	150 A	250 A	40 201 040		
50	200 A	300 A	40 201 050	40 301 050	
75	250 A	350 A		40 301 075	
100	300 A	400 A		40 301 100	
120	350 A	450 A			40 501 120
150	450 A	500 A			40 501 150

Dimensions



	A	B	C	D	d	E	H	K	L	M
SK 2	21	32	50	26	4,5	38	57	115	152	31
SK 3	33	44	70	32	5,5	44	66	158	204	38
SK 5	45	45	71	32	5,5	45	50	165	20	

Socket-outlet (female)



Socket	Rated current welding cycle		SK 2	SK 3	SK 5
	60%	30%			
Wire cross-section (mm ²)	60%	30%			
16	100 A	150 A	42 401 016		
30	125 A	200 A	42 401 030		
40	150 A	250 A	42 401 040		
50	200 A	300 A	42 401 050	43 401 050	
75	250 A	350 A		43 401 075	
100	300 A	400 A		43 401 100	
120	350 A	450 A			45 401 120
150	450 A	500 A			45 401 150
à vis	200 A	300 A	42 401 121		
à vis	300 A	400 A		43 401 121	
à vis	450 A	500 A			45 401 121



Coupler socket	Rated current welding cycle		SK 2	SK 3	SK 5
	60%	30%			
Wire cross-section (mm ²)	60%	30%			
16	100 A	150 A	42 301 016		
30	125 A	200 A	42 301 030		
40	150 A	250 A	42 301 040		
50	200 A	300 A	42 301 050	43 301 050	
75	250 A	350 A		43 301 075	
100	300 A	400 A		43 301 100	
120	350 A	450 A			45 301 120
150	450 A	500 A			45 301 150

Spare parts	SK 2	SK 3	SK 5
Socket			
Contact	42 301 021	43 301 021	45 301 021
Insulating handle	42 301 013	43 301 013	45 301 013
Insulating interior	42 401 013	43 401 013	45 401 013
Plug			
Contact	40 201 011	40 301 011	40 501 011
Insulating handle	40 201 013	40 301 013	40 501 013
Insulating interior	42 901 013	43 901 013	45 901 013
Screw			
Ø14 (except SK 2 : Ø10)	42 000 121	43 000 121	45 000 121

Copper ferrules

Selection of ferrules depends on the cable: the cross-section of the flexible cable mentioned in the table below is for information only. Please check dimensions as these may vary according to cables and manufacturers.

Wiring (mm ²)		Internal diameter (mm)	Straight threaded *		
Flexible	Stranded		SK 2	SK 3	SK 5
16	25	6,6	42 301 416		
25	35	7,9	42 301 430		
35	50	9,2	42 301 440		
50	70	11	42 301 450	43 301 450	
70	95	13,1		43 301 475	
95	120	14,5		43 301 400	
120	150	16,2			45 301 520
150	185	18			45 301 550

* Wiring with crimping lugs, according to NF C20-130 standard (for VDE 0220 standard, please contact us)

Crimping: double hexagonal crimping is recommended.